

Year 3: Engineering: ASSIGNMENT 2



Instructions:

- Having assembled the leg bottom, top and general assembly models of the Prosthetic leg in tutorial 3. You are required to create the THREE following drawings using the template you created in year 2.

Assignment 2A: PROSTHETIC LEG TOP ASSEMBLY

Assignment 2B: PROSTHETIC LEG BOTTOM ASSEMBLY

Assignment 2C: PROSTHETIC LEG GENERAL ASSEMBLY

Create on an appropriate paper size and scale. The examples shown are on an A2 Sheet. Create each as a dwfx file for handing in. Ensure the drawing numbers entered in the tables match the drawings eg the drawing number used in Assignment 1C matches that for part 1 in the Assignment 2A table. (see note 1)

Assignment 2A: PROSTHETIC LEG TOP ASSEMBLY

PARTS LIST			
ITEM	QTY	TITLE	DRAWING NUMBER
1	1	CALF	BG2-T3-003C-2000-PT
2	1	Calf-Knee Joint	BOUGHT IN MATERIAL
3	1	Calf-Knee Joint Top	BOUGHT IN MATERIAL
4	1	Calf Pru Piston	BOUGHT IN MATERIAL
5	1	Calf Pru Cylinder	BOUGHT IN MATERIAL

FIXTURES			
ITEM	QTY	TITLE	DESCRIPTION
6	4	ISO 7379 - M10 x 16	Hexagon socket head shoulder screws
7	1	ISO 4762 - M6 x 30	Hexagon Socket Head Cap Screw
8	1	ISO 4762 - M6 x 10	Hexagon Socket Head Cap Screw

General Notes -
 BOUGHT IN MATERIAL SUPPLIED BY FFSTO.
 ASSEMBLE PARTS IN WORKSHOP 1.
 ENSURE QUALITY CONTROL TESTING IS COMPLETE.
 GENERAL TOLERANCE ±0.2mm

CAD/CRAFT DESIGN		Drawing No:	
142 St. Mary St. Suite 1004		BG-T3-002-2A-SA	
Vancouver, BC V6C 1K5			
Project: PROSTHETIC LEG			
Title: PROSTHETIC LEG - TOP ASSEMBLY			
SCALE	DRAWN BY	WD	SHEET SIZE
1:1	DATE	31/03/2020	A2
	CHKD BY	NQ	SHEET No:
		31/03/2020	1/3

Assignment 2B: PROSTHETIC LEG BOTTOM ASSEMBLY

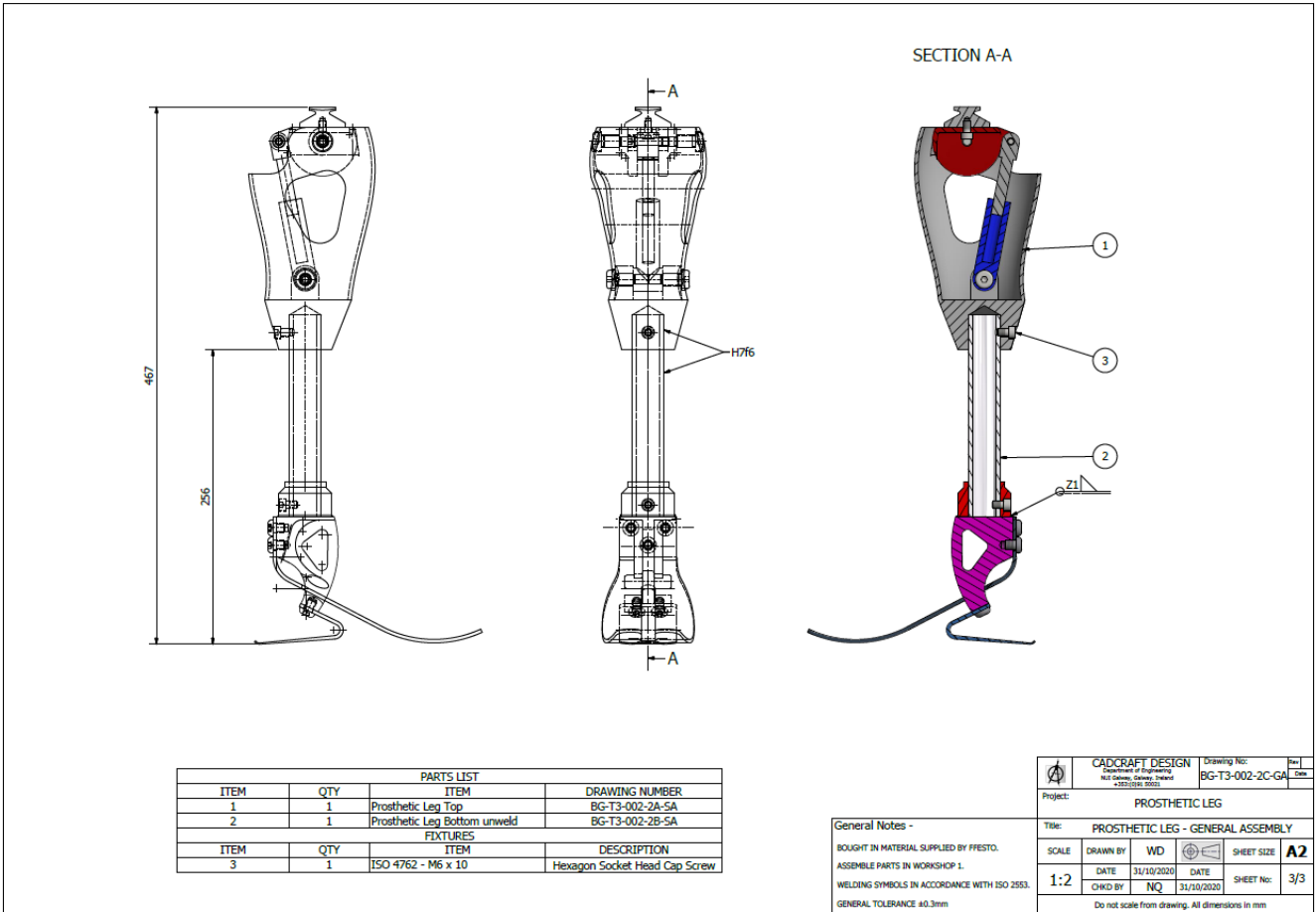
PARTS LIST			
ITEM	QTY	TITLE	DRAWING NUMBER
1	1	Foot Support Bracket	BOUGHT IN MATERIAL
2	1	Foot Top	BOUGHT IN MATERIAL
3	1	Foot Heel	BOUGHT IN MATERIAL
4	1	Foot Boss	BOUGHT IN MATERIAL
5	1	Foot Shin	BOUGHT IN MATERIAL

FIXTURES			
ITEM	QTY	TITLE	DESCRIPTION
6	1	ISO 4762 - M6 x 10	Hexagon Socket Head Cap Screw
7	5	ISO 7380 - M8 x 10	Hexagon Socket Button Head Screw - Product grade A

General Notes -
 BOUGHT IN MATERIAL SUPPLIED BY FFSTO.
 ASSEMBLE PARTS IN WORKSHOP 1.
 ENSURE QUALITY CONTROL TESTING IS COMPLETE.
 GENERAL TOLERANCE ±0.2mm

CAD/CRAFT DESIGN		Drawing No:	
142 St. Mary St. Suite 1004		BG-T3-002-2B-SA	
Vancouver, BC V6C 1K5			
Project: PROSTHETIC LEG			
Title: PROSTHETIC LEG - BOTTOM ASSEMBLY			
SCALE	DRAWN BY	WD	SHEET SIZE
1:2	DATE	31/03/2020	A2
	CHKD BY	NQ	SHEET No:
		31/03/2020	2/3

Assignment 2C: PROSTHETIC LEG GENERAL ASSEMBLY



Save the drawings as

Assignment 2A.dwfx / Assignment 2B.dwfx / Assignment 2C.dwfx

Note 1: Please note when editing the table columns text change the top text table first and then the second table after completing the split.